

A modern interior scene featuring a wooden door with a glass insert, a large potted plant, a wicker basket, and a wooden bench. The door is made of light-colored wood and has a glass insert with a grid pattern. To the right of the door is a large potted plant with green leaves in a woven basket. To the left of the door is a wicker basket filled with books and a small plant. In the foreground, there is a wooden bench with a grey cushion and a small rug. The background shows a staircase and a wall with a coat rack.

# *Premium lifestyle scenes for door manufacturers*

Get 6 premium-quality images with exclusive ownership rights at

**\$359/bundle**

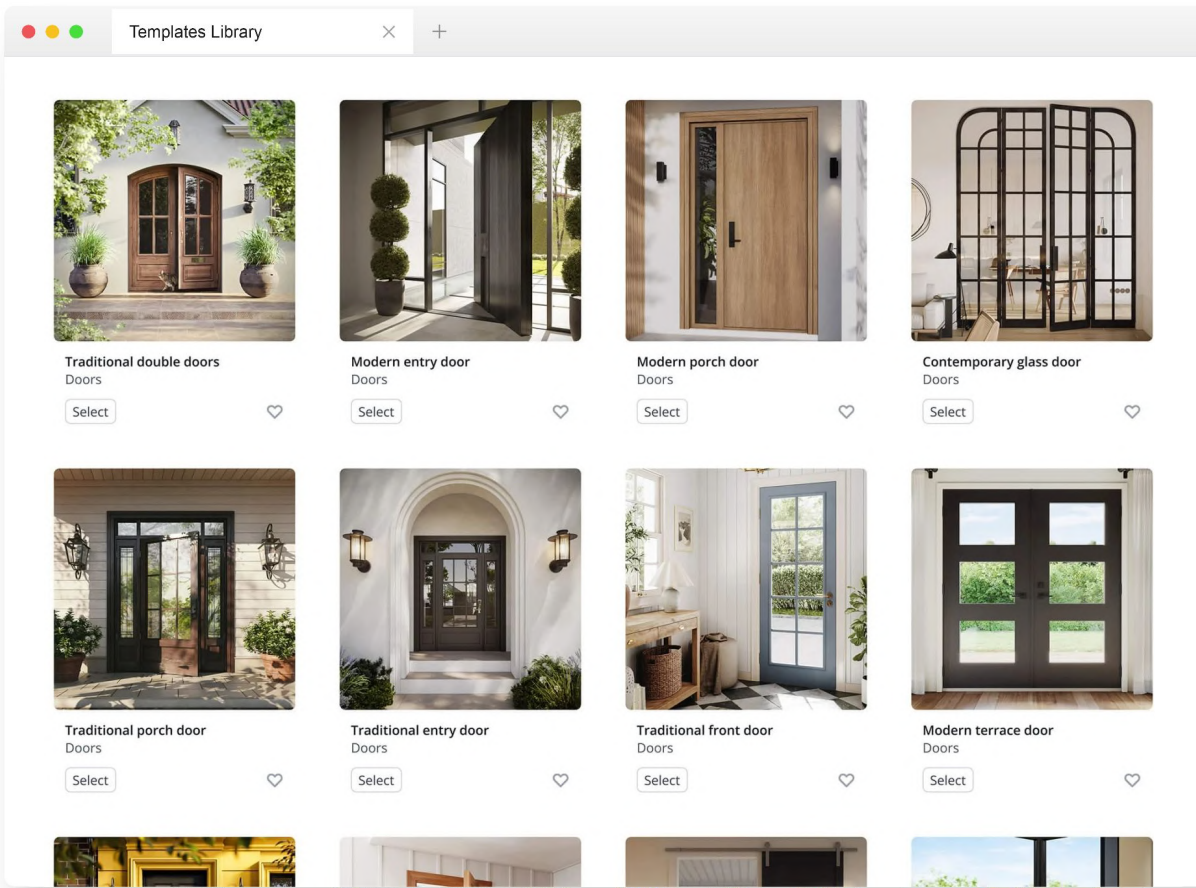


CGIFURNITURE

# *Premium lifestyle at \$359 per bundle*

Get a marketing bundle comprising a scene and 6 images: a premium lifestyle with product in 3 material options and 3 close-ups, one for each. With that wealth of imagery and editing opportunities, you will never be short of visuals.

**Schedule a demo**





***The process is  
easy as pie:***

1. Select a scene from our Premium Templates Library.
2. Send us a product photo or AutoCAD drawing.
3. Get 6 beautiful renderings.



# *Premium lifestyles examples*

Every month, we add 120 scenes to the Premium Library. There, you will find lifestyles for every type of space designed for a specific location and style.



***Modern apartment door***

516513 Doors

***Traditional  
interior doors***

516515 Doors



***Sliding barn door***

516523 Doors





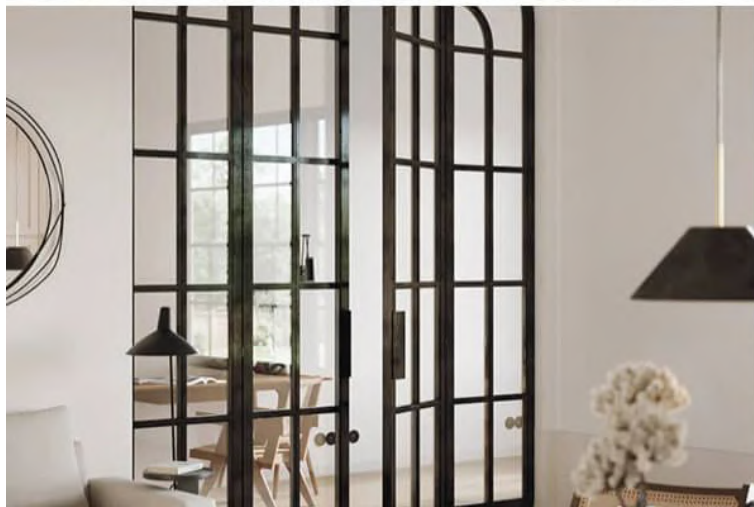
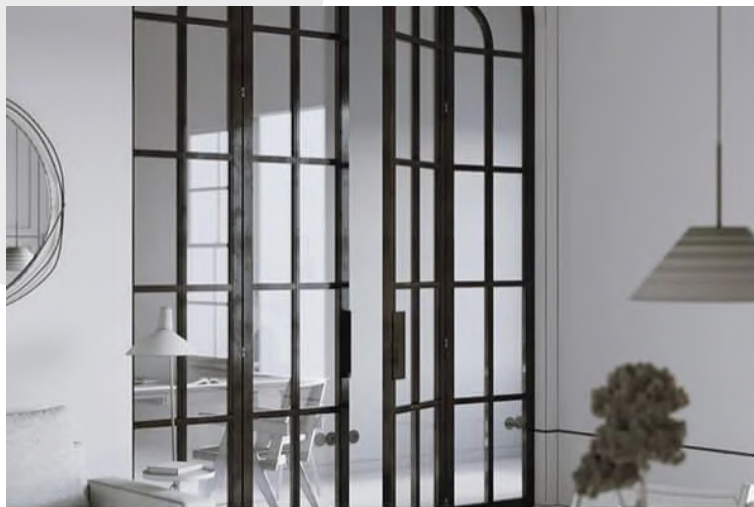
***Traditional  
interior door***

516532 Doors



***Contemporary  
glass door***

516535 Doors





***Traditional porch  
door***

516540 Doors



***Modern porch  
door***

516543 Doors





***Modern entry  
door***

516544 Doors





***Traditional front  
door***

516545 Doors



***Modern terrace  
door***

516546 Doors



***Modern terrace  
door***

516547 Doors





***Traditional  
double doors***

516548 Doors



***Traditional bay  
window***

516550 Windows





***Modern bay  
window***

516552 Windows





***Sliding door  
closeup***

516553 Doors



***Traditional  
interior doors***

516835 Doors



***Traditional entry  
door***

516836 Doors





# *1 Template, 6 images, endless usage*

**\$359**

The bundle includes 6 images made based on a premium 3D scene. No competitor of yours will have such a lifestyle in their marketing kit, since it's been designed and made from scratch specifically for Premium Library. Below you will see what type of renderings you will get within the offer.

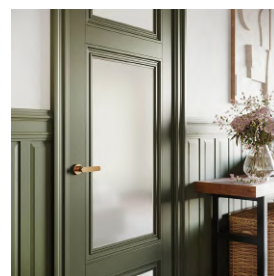
## **1** *Lifestyle Rendering*



## **2** *Finish options*



## **3** *Close-ups for all Finish Options*



# *Infinite additional imagery*

What is more, you will be able to get any number of new images from the purchased scene at huge discounts.



**\$60** *Revision*



**\$20** *Option*



**\$60** *Closeup*

# Additional services



## Client rendering

Give your clients confidence. Just let them see what your product will look like in their houses using CGI.

**\$300** per bundle



## Lifestyle on demand

Bring your vision to life. Describe the look you have in mind, send references, and get your perfect image.

**\$300** Indoor, per bundle

**\$400** Outdoor, per bundle



## Material swapping

Leverage variety. Showcase different material options in the same lifestyle only at a fraction of the cost.

**\$20**



## Product swapping

Showcase variety. Display different products in the same scene, reducing costs and enhancing presentation.

**\$60**



## Product 3D modeling

Transform concepts into visuals. Create detailed 3D models of your products for impactful presentations and marketing.

**\$80** starting



## Talent rendering

People buy from people. Have 3D talents added to the rendering in order to make the most of your advertising.

**\$390** per bundle



## 3D animation

Shine on social media. Get a video showing the aesthetics of your tile in motion and in a beautiful scene.

**\$90/sec** Promo

**\$30/sec** Installation

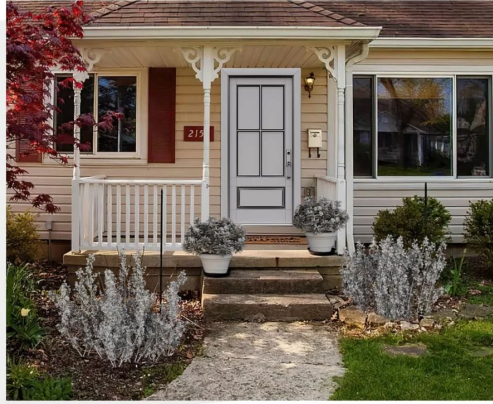


## Augmented Reality

Enhance online customer experience. Let your customers try on your product in their space.

**\$180**





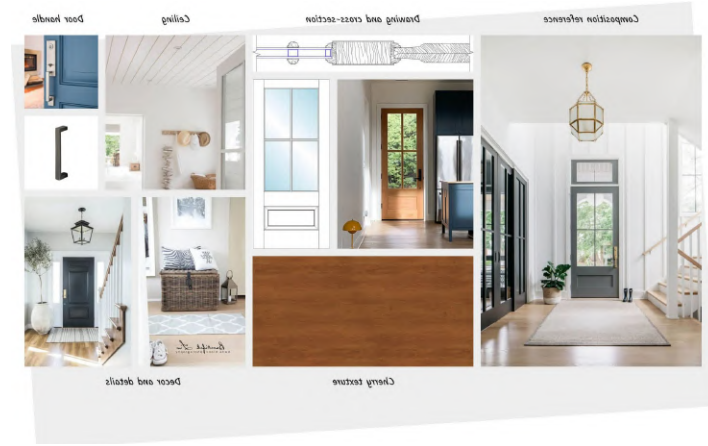
## ***Client rendering***

Take customization to a whole new level. Have your doors post-produced into a photo of a client's space. Just send us a photo, and you will get a beautiful result within 2 days.



# *Lifestyle on demand*

Have a unique lifestyle designed based on your vision at a fixed price: \$300 for Interior Lifestyle and \$400 for Outdoor Lifestyle.



# *Material swapping*

The product variety is a genuine marketing edge. Use its power to your advantage by showing customers all design variants of your tile in a lifestyle scene. After all, it's so fast and easy.





# *Product swapping*

Harness versatility as a strategic advantage. Display various product options in one lifestyle scene effortlessly and efficiently. It's quick, simple, and effective.



# ***Talent rendering***

You can utilize renders not only to showcase the features of individual tiles but also to create a branded image coupled with a lifestyle through the Talent product.



***Townhouse Door***

520142 Talent



***Traditional House Door***

519214 Talent



***Door to a rose garden***

520144 Talent

# ***Product 3D modeling***

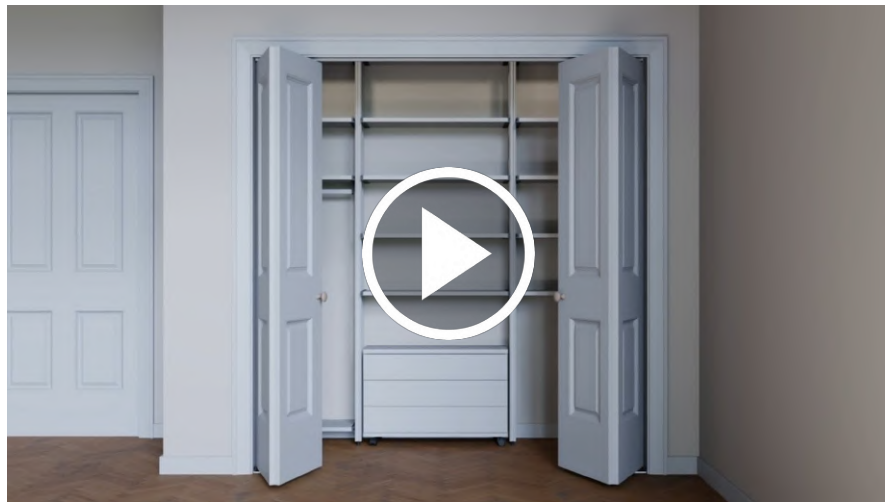
Leverage precision to your benefit. Transform your products into detailed 3D models, presenting every angle and feature in any setting. Quick, efficient, and precise.





## 3D animation

Consumers are 64-85% more likely to buy a product after watching a video. This makes a video a must-have asset for product pages, websites, and e-commerce platforms. And with CGI, you can forget about tiresome video shoots and get photorealistic 3D animations for every product.



## *AR modeling*


Enhance online customer experience. Let your customers try on your product in their space.



Please scan the QR code  
to see the product in AR



# Competition

Criteria	In-house team	Freelance	Traditional Photography	 CGIFURNITURE
Initial Investment	<b>High</b> (software, hardware, training)	<b>Moderate</b> (mainly hiring costs)	<b>High</b> (camera gear, studio setup)	<b>Low</b>
Ongoing Costs	<b>Moderate</b> (maintenance, upgrades)	<b>Varies</b> (based on project or hourly rates)	<b>Moderate</b> (equipment maintenance, studio rent)	<b>Fixed</b> (based on projects)
Realism	<b>High</b> (with skilled artists)	<b>Varies</b>	<b>Very High</b> (actual objects)	<b>High</b>
Consistency	<b>High</b> (same team & tools)	<b>Moderate</b> (may vary with different freelancers)	Moderate (lighting, setup consistency)	<b>High</b>
Turnaround Time	<b>Fast</b> (dedicated team)	<b>Varies</b> (based on freelancer availability)	<b>Moderate</b> (setup & post-processing time)	<b>Fast</b>
Scalability	<b>Moderate</b> (limited by availability of high-skilled CG artists)	<b>Low-Moderate</b> (limited by individual capacity)	<b>Low</b> (limited by physical setup space)	<b>High</b>
Revisions & Adjustments	<b>High</b> (direct control)	<b>Moderate</b> (depends on agreement)	<b>Low</b> (physical reshoots required)	<b>High</b> (3 included)
Communication Ease	<b>High</b> (in-house discussions)	<b>Moderate</b> (external communication)	<b>High</b> (direct in-person)	<b>High</b> (CGI CRM)
Medium Modeling cost	<b>\$378</b> ( <a href="#">source</a> ) (3 models per week)	<b>\$120</b> ( <a href="#">source</a> )	-	<b>\$150</b>
Medium Lifestyle cost 4k	<b>\$827</b> ( <a href="#">source</a> ) (2 lifestyles per week)	<b>\$200</b> ( <a href="#">source</a> )	<b>\$2.000</b> ( <a href="#">source</a> )	<b>\$300</b>



# Quarterly packages

We custom-design pricing packages for businesses.  
This helps us to find ways to offer you bigger discounts.

**Subscribe to get a discount!**

Standard

**\$4000** / month

\*Billed quarterly (\$12000 / 3mo)

**12% Discount**

Premium

**\$8000** / month

\*Billed quarterly (\$24000 / 3mo)

**24% Discount**

Enterprise

*from*

**\$16000** / month

\*Billed quarterly

**Individual price**

## Here are our Partners

west elm



dhp<sup>®</sup>  
furniture

seawin

WALKER EDISON

BISLEY

ARTICLE.

Bdi

 SMALLBONE

 Dufresne

 MIXTILES

 sklar

WHOLESALE  
CABINETS

Nolah

LAMVIN<sup>™</sup>

jOF<sup>®</sup>FRAN INC.

hotbath  
italian bathroomware

WRW  
& CO.  
FURNITURE

 UK Radiators  
QUALITY RADIATORS. DELIVERED.

closet  
world<sup>®</sup>

 Trueform  
concrete

renewed materials Inc.

SLUX

ho  
ss

 VOGEL

 MEREWAY  
KITCHENS

AMREIN  
WOHNEN

blocblinds<sup>®</sup>

GRAIN & FRAME

 OMI

Steela.  
k r a m e r

SF  
SKYLINE  
FURNITURE  
MFG.

AURORA<sup>®</sup>  
L I G H T I N G

 SYMMONS

 URBAN IRONCRAFT  
designer quality craftsmanship

unify

# ***What files are needed?***

For all the projects you will see here, our clients provided us with detailed briefs and attached all the necessary files. Such comprehensive SOWs allowed us to deliver the results at the costs and within the timeframes you will find by the renderings. Take a look at the list of main elements of these briefs so you could use them.



## **CAD Files & Photos**

Product drawings (in dwg, pla or pdf file), photos, and sketches (if available).



## **References**

Photos for lighting, composition, general mood, furniture, decor, and other elements to use in the render.



## **Brief File**

A pdf file with project information: where to use certain textures, texture examples, names, links, etc.



## **Textures**

Material textures in high quality, usually as front and side photos of an object or links to them.



## **Project Description**

General info: how the renders will be used, what project features they are to highlight, etc.

***Fill in the brief now***

If you already have a good-quality 3ds Max, Revit, Maya, or Rhino 3D model of the product, please share it with us. It will help you save money and time. However, the 3D model should be checked by the CGI team first.



# Contact Us

Contact us via phone, email or our website's chat - we're available 24/7 and gladly answer all your questions.

**TEL :** +1 607 383 2001 NY, USA

**TEL :** +44 203 617 1683 LONDON, ENGLAND

**EMAIL :** [SALES@CGIFURNITURE.COM](mailto:SALES@CGIFURNITURE.COM)

**WEB :** [CGIFURNITURE.COM](https://CGIFURNITURE.COM)



2024 © CGIFURNITURE. ALL RIGHTS RESERVED.