

# *Marketing imagery templates for panels*

Get a gorgeous 3D scene template  
plus 6 images for your products at

**\$359**

Exclusive property rights,  
additional renders from **\$20**

 CGIFURNITURE



# *Premium lifestyles at \$359 per bundle*


Within the premium lifestyle bundle, you will get 6 brand-new images for \$359. Specifically, 3 main lifestyles with your product in 3 materials and 3 close-ups.

**Schedule a demo**

×

+


Templates Library



Office meeting pod  
Panels

Select


♡



Acoustic office ceiling  
Panels

Select


♡



Acoustic ceiling lobby  
Panels

Select


♡



Office ceiling tiles  
Panels

Select


♡



Office wall panel  
Panels

Select

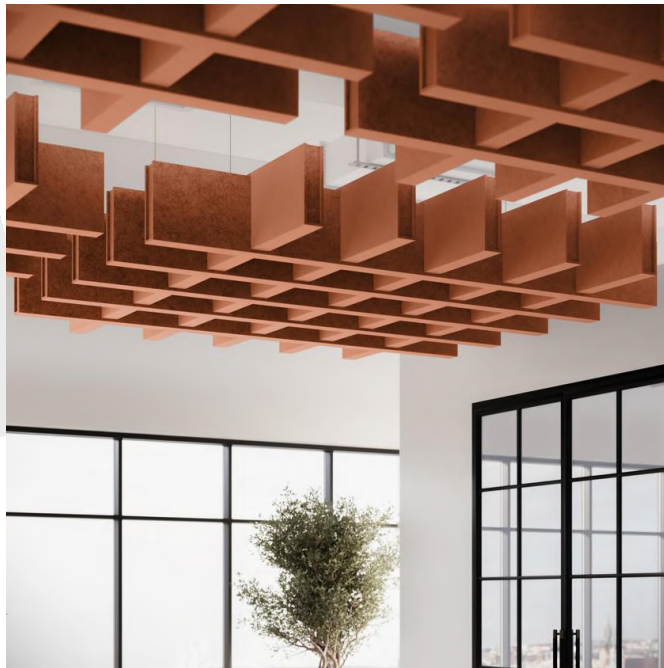
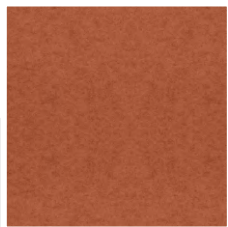
♡



Internal office pods  
Panels

Select

♡



***How does it work?***

***The process is easy as pie:***

1. Select a scene from our Premium Templates Library.
2. Send STP file of your product.
3. Share material photos.
4. Get 6 beautiful renderings.



# *Examples of premium templates*

The library is replenished with about 120 lifestyle templates every month. There, you will find scenes for every space: living rooms, kitchens, bathrooms, commercial interiors, as well as commercial and residential outdoor spaces.



*Office meeting pod*

523939 Panel

***Acoustic Office  
Ceiling Panels***

523940 Panel





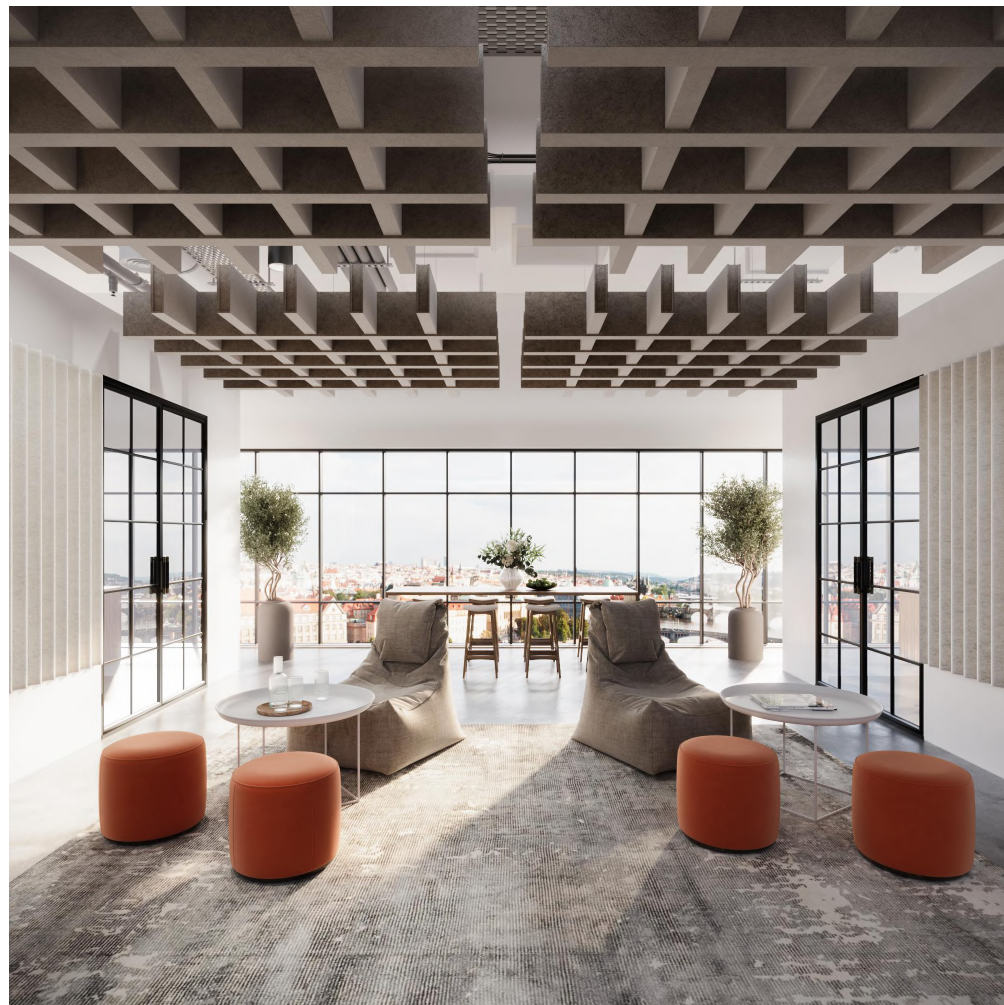
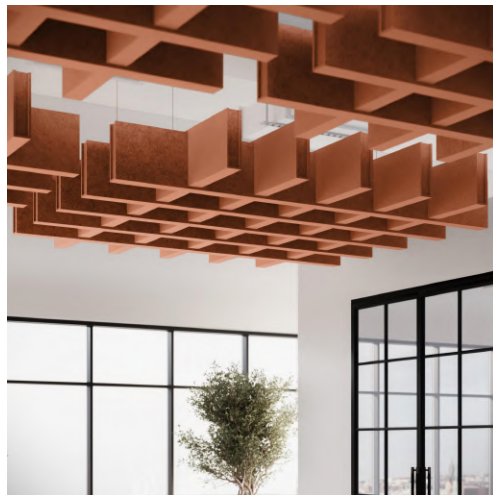
*Internal office  
pods*

523940 Panel



***Acoustic ceiling  
lobby***

520788 Panel





*Acoustic office  
pod*

530370 Panel





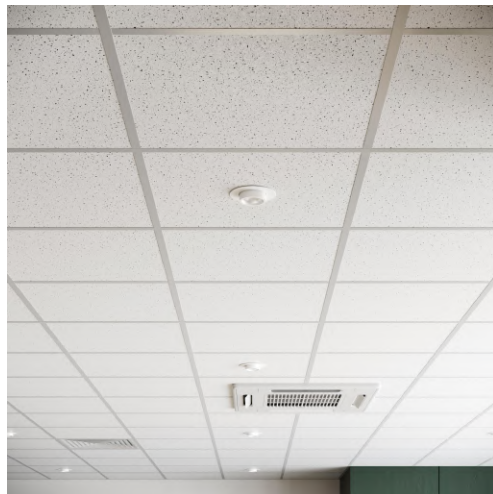
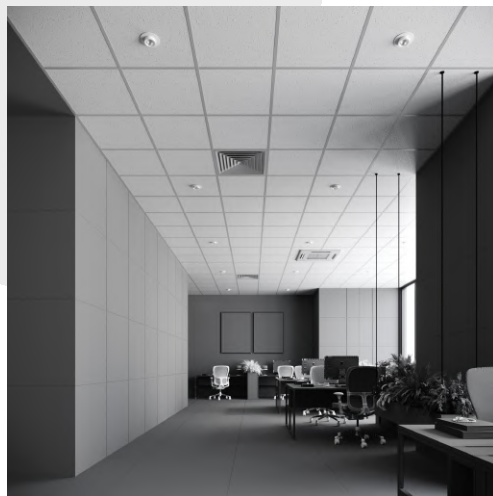
***Office Meeting  
Pod***

530370 Panel



***Office ceiling tiles***

524810 Panel





# 1 Template, 6 images, endless usage

**\$359**

The bundle includes 6 images made based on a premium 3D scene and 2 revisions. No competitor of yours will have such a lifestyle in their marketing kit, since it's been designed and made from scratch specifically for Premium Library. Below you will see what type of renderings you will get within the offer.

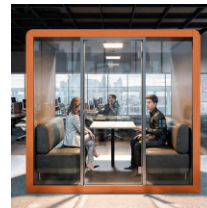
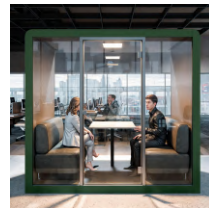
## 1 Lifestyle Rendering



## 2 Lifestyle options



## 3 Close-ups for Finish Options



# *Infinite additional imagery*

What is more, you will be able to get any number of new images from the purchased scene at huge discounts.



**\$60** *Revision*



**\$20** *Option*



**\$60** *Closeup*



# Advanced 3D rendering solutions



## Client rendering

Have your products incorporated into a lifestyle with a client's space.

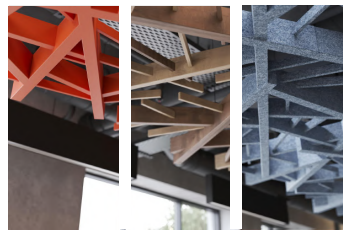
**\$300** per bundle



## Lifestyle on demand

Get a 3D lifestyle rendering generated based on your idea.

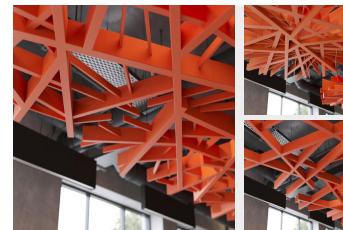
**\$300** Indoor, per bundle  
**\$400** Outdoor, per bundle



## Finish swapping

Personalize e-shopping by showing all material variants of your products.

**\$20**



## Product swapping

Showcase various product models in a striking 3D lifestyle rendering.

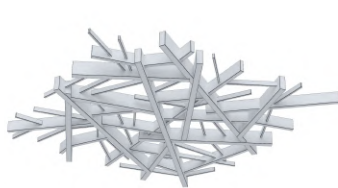
**\$80** including 3D modeling



## Talent rendering

Have photorealistic 3D people added to your lifestyles.

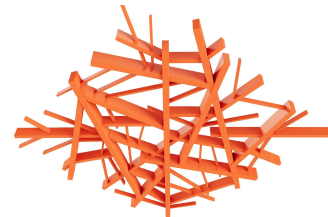
**\$390** per bundle



## Product 3D modeling

Get a 3D model of your product for lifestyles, silos and AR.

**\$40** if you send an stp model  
**\$80-\$160** from CAD file



## Silo rendering

Show your product against a white background.

**\$30**



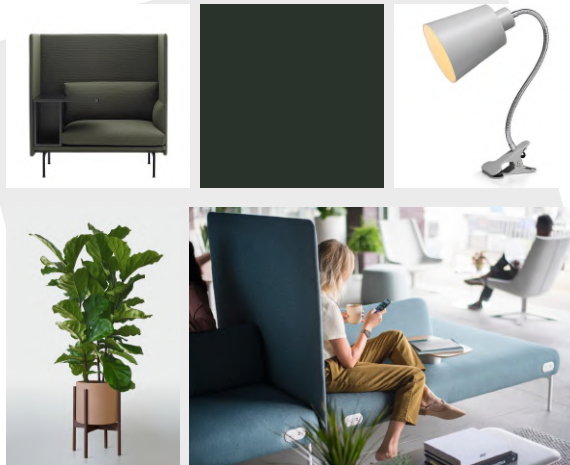
## ***Client rendering***

Show your clients what the panels will look like in their space using 3D rendering. Just send us photos of your client's room and get an impeccable result within 2 days. CGI will help you make your offer unbeatable, provide next-level service, and gain customers' trust and loyalty.



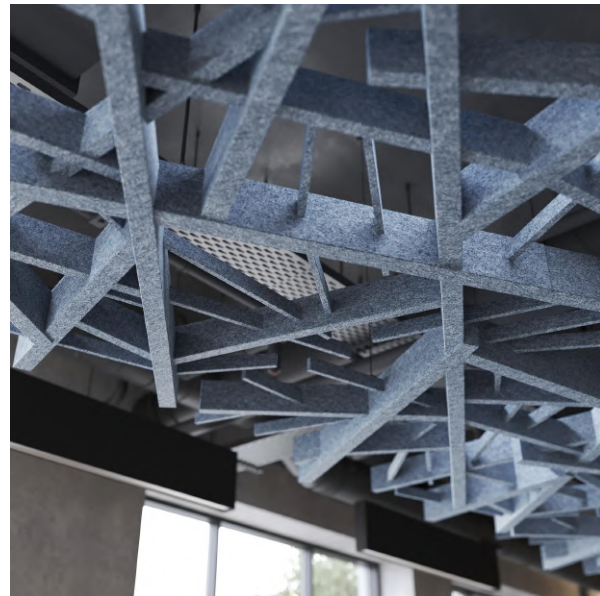
# *Lifestyle on demand*

No one understands and feels your product like you do. Naturally, you come up with brilliant ideas for advertising lifestyles. Well, you no longer have to amass them in your drawer. Fill out the brief, provide a few references, and we will bring all your ideas to life.



# *Material swapping*

Cater to customers' love for choosing and trying. Show them the panels in every material in a lifestyle. This will help people better appreciate the aesthetics of every option and choose the one they like best.





# ***Product swapping***

Help your customers discover the option that will fit in their space style perfectly. Show various models in the same lifestyle and cater to every taste.



# ***Talent rendering***

Have your product endorsed by 3D characters. Just describe what kind of people you would like to see in your lifestyle, and get your dream ad. A family with kids, a business lady in a smart suit, a kitten stretching in the sunbeam — we will help you with any concept.



***Interior talent scene***

523939 Talent



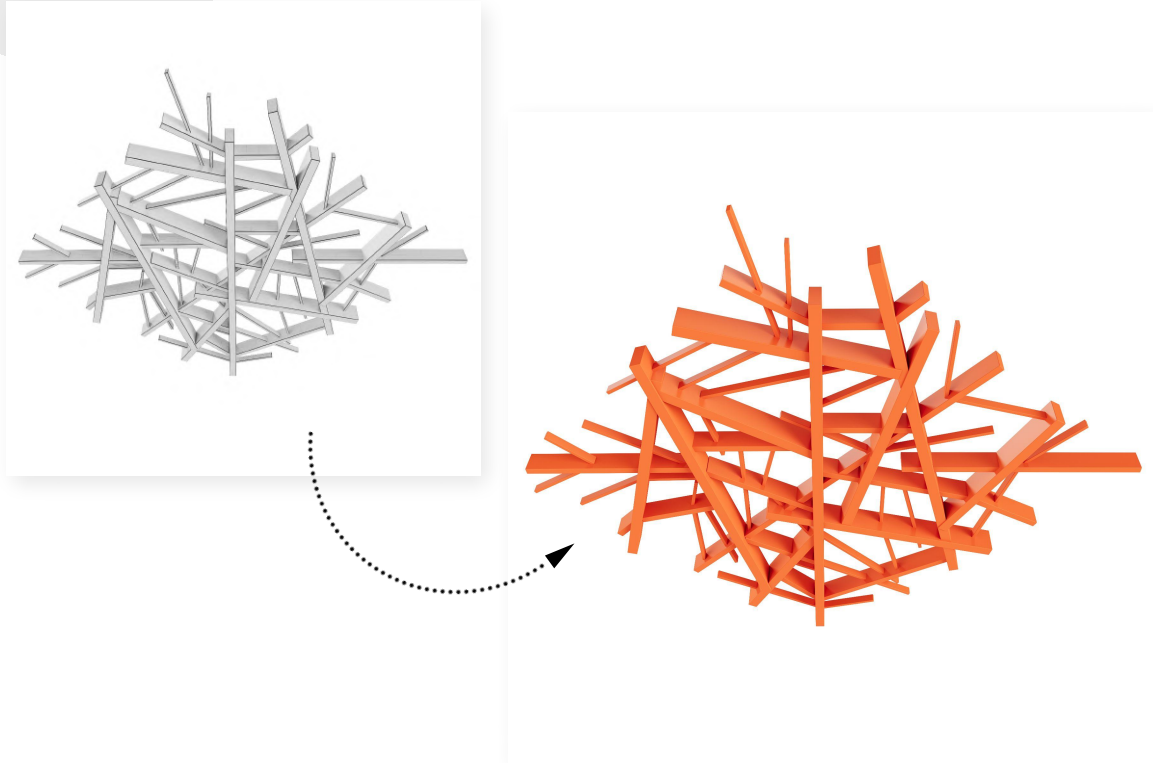
***Outdoor talent scene***

520921 Talent



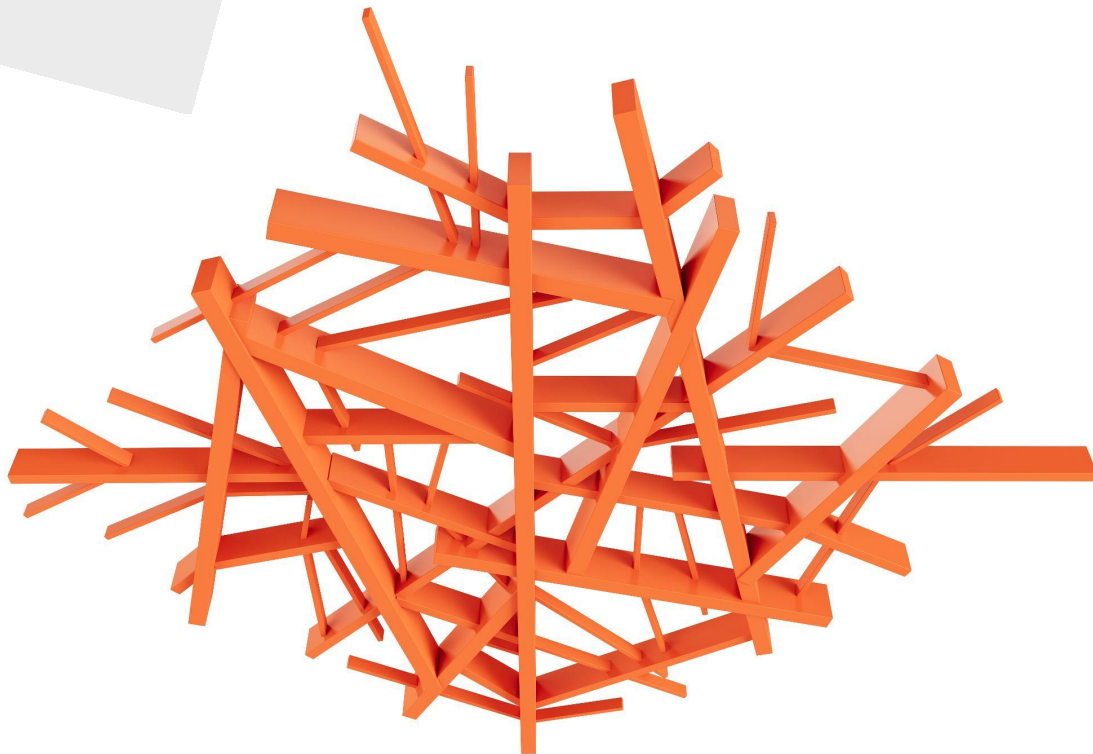
# ***Product 3D modeling***

Get an accurate 3D model for your product, and you will unlock hundreds of opportunities for creative marketing. A 3D model is key to material swapping, silos and lifestyles, Augmented Reality, 360-degree views, and many, many more visuals.




# ***Silo rendering***

Get a universal marketing asset to use on product pages, your website, and e-commerce platforms. Silos are often requested by the latter, and these give the most clear and accurate representation of the product in terms of colors, textures and detailing.





# Competition

Criteria	In-house team	Freelance	Traditional Photography	 CGIFURNITURE
Initial Investment	<b>High</b> (software, hardware, training)	<b>Moderate</b> (mainly hiring costs)	<b>High</b> (camera gear, studio setup)	<b>Low</b>
Ongoing Costs	<b>Moderate</b> (maintenance, upgrades)	<b>Varies</b> (based on project or hourly rates)	<b>Moderate</b> (equipment maintenance, studio rent)	<b>Fixed</b> (based on projects)
Realism	<b>High</b> (with skilled artists)	<b>Varies</b>	<b>Very High</b> (actual objects)	<b>High</b>
Consistency	<b>High</b> (same team & tools)	<b>Moderate</b> (may vary with different freelancers)	Moderate (lighting, setup consistency)	<b>High</b>
Turnaround Time	<b>Fast</b> (dedicated team)	<b>Varies</b> (based on freelancer availability)	<b>Moderate</b> (setup & post-processing time)	<b>Fast</b>
Scalability	<b>Moderate</b> (limited by availability of high-skilled CG artists)	<b>Low-Moderate</b> (limited by individual capacity)	<b>Low</b> (limited by physical setup space)	<b>High</b>
Revisions & Adjustments	<b>High</b> (direct control)	<b>Moderate</b> (depends on agreement)	<b>Low</b> (physical reshoots required)	<b>High</b> (3 included)
Communication Ease	<b>High</b> (in-house discussions)	<b>Moderate</b> (external communication)	<b>High</b> (direct in-person)	<b>High</b> (CGI CRM)
Medium Modeling cost	<b>\$378</b> ( <a href="#">source</a> ) (3 models per week)	<b>\$120</b> ( <a href="#">source</a> )	-	<b>\$150</b>
Medium Lifestyle cost 4k	<b>\$827</b> ( <a href="#">source</a> ) (2 lifestyles per week)	<b>\$200</b> ( <a href="#">source</a> )	<b>\$2.000</b> ( <a href="#">source</a> )	<b>\$300</b>

# Quarterly packages

We custom-design pricing packages for businesses.  
This helps us to find ways to offer you bigger discounts.

**Subscribe to get a discount!**

Standard

**\$4000** / month

\*Billed quarterly (\$12000 / 3mo)

**12% Discount**

Premium

**\$8000** / month

\*Billed quarterly (\$24000 / 3mo)

**24% Discount**

Enterprise

*from*

**\$16000** / month

\*Billed quarterly

**Individual price**



# Here are our partners

**SIEMENS**  
*Ingenuity for life*

**seawin**

**dhp**  
furniture

WALKER EDISON

ARTICLE.

**BISLEY**

 **SMALLBONE**

**BDi**

 **Dufresne**

west elm

 **MIXTILES**

 **sklar**

**WHOLESALE  
CABINETS**

**Nolah**

**LAMVIN**

**JOFRAN INC.**

**hotbath**  
italian bathroomware

**WRW  
&CO.**  
FURNITURE

 **UK Radiators**  
QUALITY RADIATORS. DELIVERED

**closet  
world**

 **Trueform**  
concrete

 **renewed materials inc.**

**SLUX**

**ho  
SS**

 **VOGEL**

 **MEREWAY**  
KITCHENS

**AMREIN**  
WOHNEN

 **SKYLINE  
FURNITURE  
MFG.**

**blocblinds**

GRAIN & FRAME

 **OMI**

**Steela.**

k r a m e r

**unify**

**AURORA**  
LIGHTING

 **SYMMONS**

 **URBAN IRONCRAFT**  
design | quality | craftsmanship

# ***What files are needed?***

For all the projects you will see here, our clients provided us with detailed briefs and attached all the necessary files. Such comprehensive SOWs allowed us to deliver the results at the costs and within the timeframes you will find by the renderings. Take a look at the list of main elements of these briefs so you could use them.



## **CAD Files & Photos**

Product drawings (in dwg, pla or pdf file), photos, and sketches (if available).



## **References**

Photos for lighting, composition, general mood, furniture, decor, and other elements to use in the render.



## **Brief File**

A pdf file with project information: where to use certain textures, texture examples, names, links, etc.



## **Textures**

Material textures in high quality, usually as front and side photos of an object or links to them.



## **Project Description**

General info: how the renders will be used, what project features they are to highlight, etc.

***Fill in the brief now***

If you already have a good-quality 3ds Max, Revit, Maya, or Rhino 3D model of the product, please share it with us. It will help you save money and time. However, the 3D model should be checked by the CGI team first.

# Contact Us

Contact us via phone, email or our website's chat - we're available 24/7 and gladly answer all your questions.

**TEL :** +1 607 383 2001 NY, USA

**TEL :** +44 203 617 1683 LONDON, ENGLAND

**EMAIL :** [SALES@CGIFURNITURE.COM](mailto:SALES@CGIFURNITURE.COM)

**WEB :** [CGIFURNITURE.COM](https://CGIFURNITURE.COM)



2024 © CGIFURNITURE. ALL RIGHTS RESERVED.