

A high-quality 3D architectural rendering of a modern two-story house with green and grey horizontal siding and white window frames. The house features a large patio area with a swimming pool and lounge chairs. The scene is set in a lush, green environment with trees and a clear blue sky.

# *Premium lifestyle scenes for Swimming pools and Fountains*

Get a gorgeous 3D scene template  
for marketing plus 6 amazing  
images for your products at

**\$359**

Exclusive property rights,  
additional renders from **\$20**

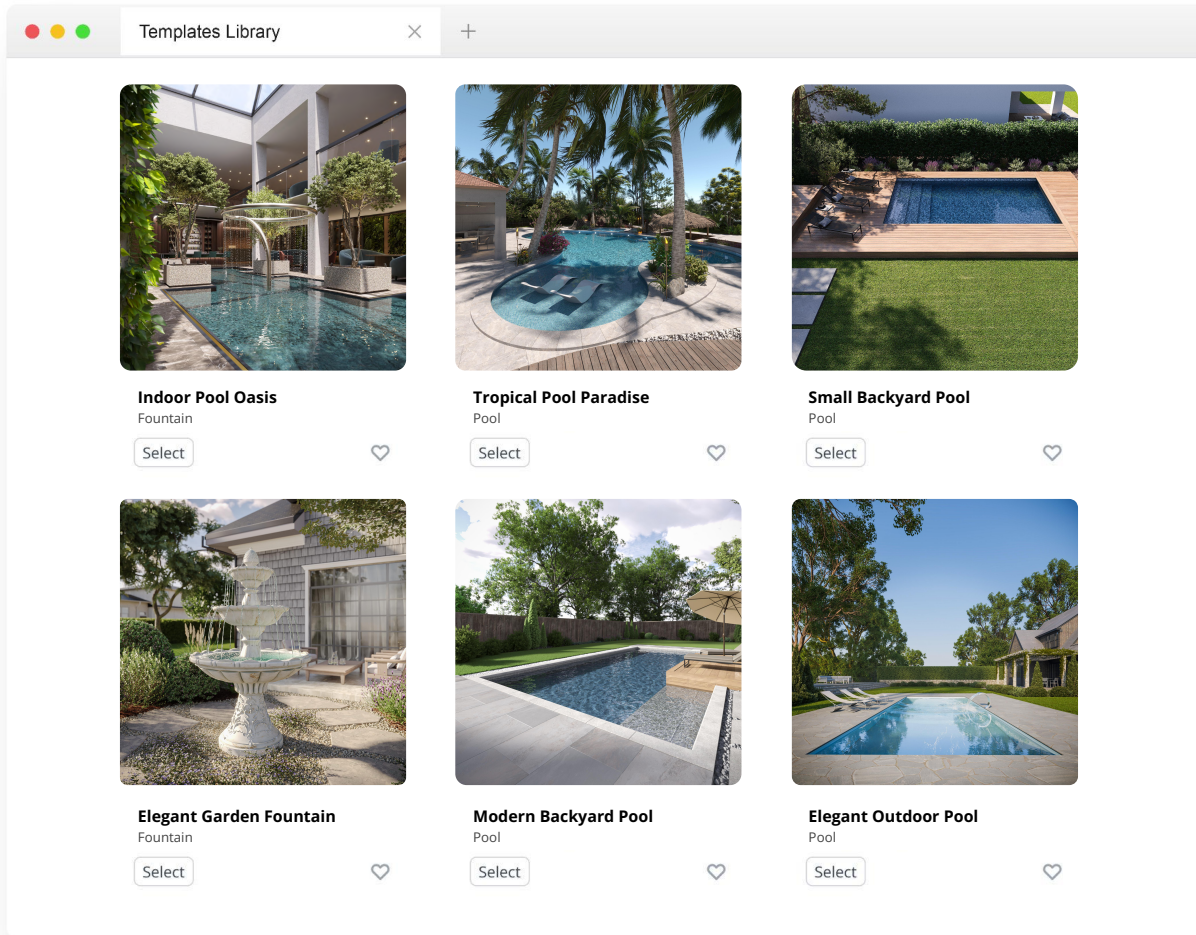
 CGIFURNITURE



# *Premium lifestyles at \$359 per bundle*

Within the premium lifestyle bundle, you will get 6 brand-new images for \$359. Specifically, 3 main lifestyles with your product in 3 materials and 3 close-ups.

**Schedule a demo**





## ***The process is easy as pie:***

1. Select a scene from our Premium Templates Library.
2. Send STP file of your product.
3. Share material photos.
4. Get 6 beautiful renderings.



# ***Premium templates library***

In the premium library, you will find a wealth of 3D scenes to fit any advertising and marketing concept. There are scenes for any type of space, including kitchens, bathrooms, open-plan rooms, commercial interiors, and outdoor space of different types. In fact, we add about 120 new scenes every month. Once a scene is purchased, it is deleted from the library.



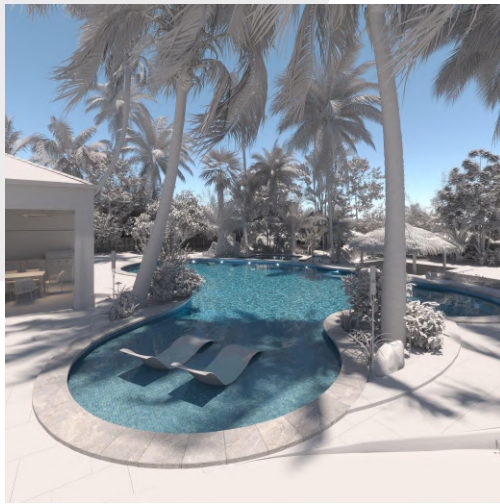
***Indoor Pool Oasis***

527589 Fountain



***Tropical Pool  
Paradise***

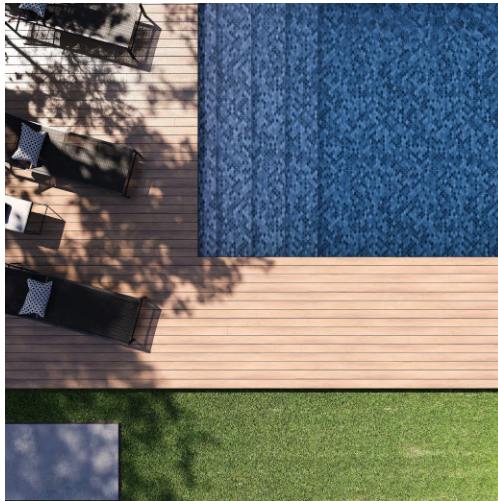
522228 Pool





***Small Backyard  
Pool***

527590 Pool





***Elegant Garden  
Fountain***

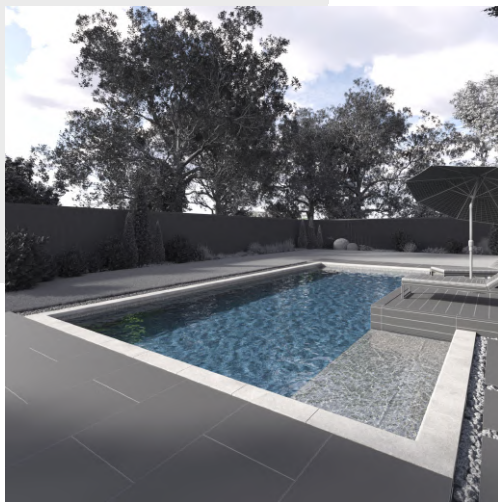
521950 Fountain





***Modern Backyard  
Pool***

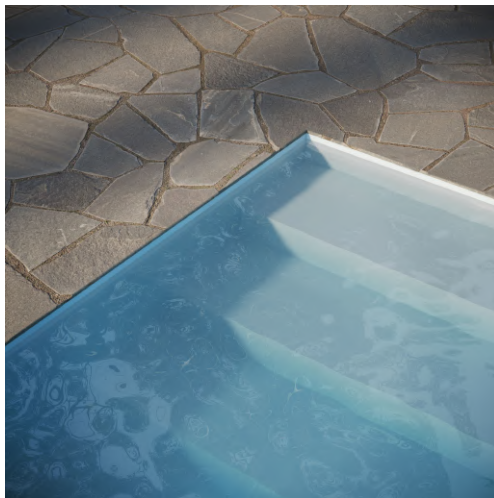
521950 Pool





***Elegant Outdoor  
Pool***

522229 Pool





# 1 Template, 6 images, endless usage

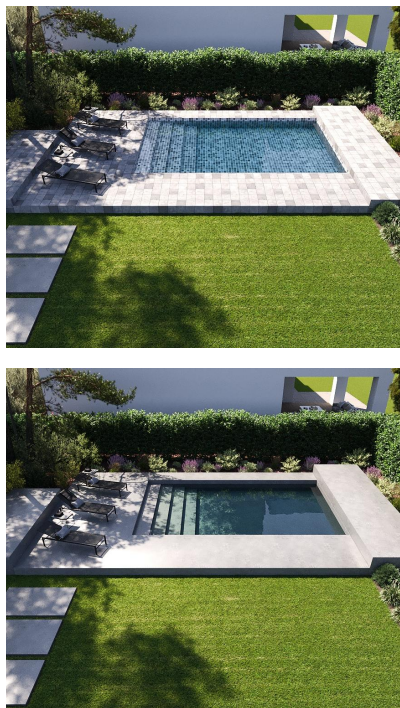
**\$359**

The bundle includes 6 images made based on a premium 3D scene and 2 revisions. No competitor of yours will have such a lifestyle in their marketing kit, since it's been designed and made from scratch specifically for Premium Library. Below you will see what type of renderings you will get within the offer.

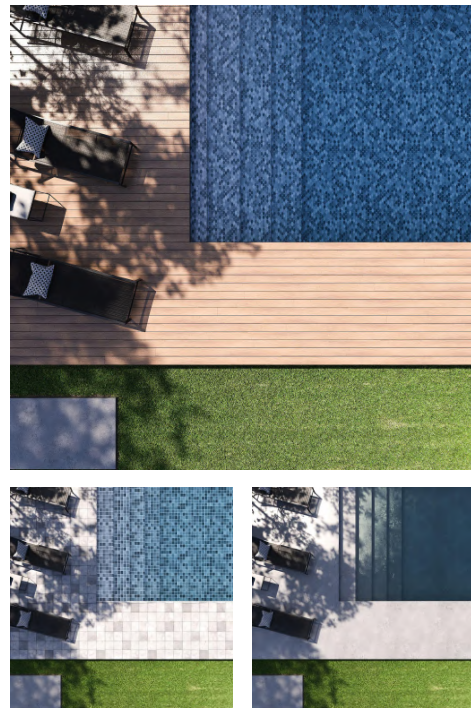
## 1 Lifestyle Rendering



## 2 Finish options



## 3 Close-ups for all finish options





# *Infinite additional imagery*

What is more, you will be able to get any number of new images from the purchased scene at huge discounts.



**\$60** *Revision*

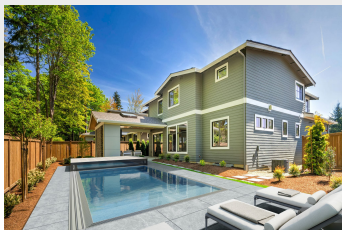


**\$20** *Option*



**\$60** *Closeup*

# Advanced 3D rendering solutions for swimming pools and fountains



## Client rendering

Have your products incorporated into a lifestyle with a client's space.

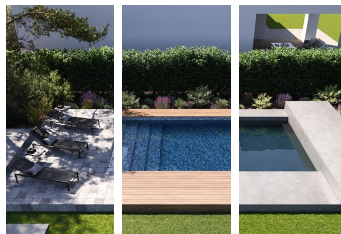
**\$300** per bundle



## Lifestyle on demand

Get a 3D lifestyle rendering generated based on your idea.

**\$300** Indoor, per bundle  
**\$400** Outdoor, per bundle



## Finish swapping

Personalize e-shopping by showing all material variants of your products.

**\$20**



## Product swapping

Showcase various product models in a striking 3D lifestyle rendering.

**\$80** including 3D modeling



## Product 3D modeling

Get a 3D model of your product for lifestyles, silos and AR.

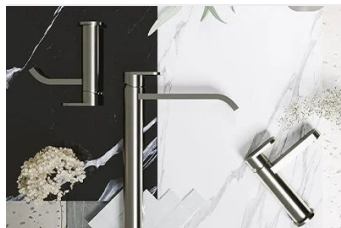
**\$40** if you send an stp model  
**\$80-160** from CAD file



## Talent rendering

Have photorealistic 3D people added to your lifestyles.

**\$390** per bundle



## Flatlay rendering

Highlight detailing and the beauty of your product's materials by combining them in a flatlay.

**\$150**



## Silo rendering

Show your product against a white background.

**\$30**



## Silo finish option

Show your product against a white background.

**\$20** for > 50 renders  
**\$15** for > 200 renders



# Advanced 3D rendering solutions for swimming pools and fountains



## Client rendering

Have your products incorporated into a lifestyle with a client's space.

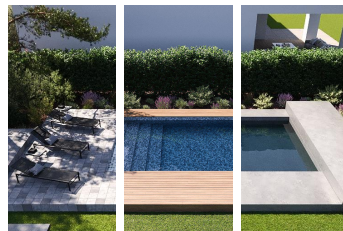
**\$300** per bundle



## Lifestyle on demand

Get a 3D lifestyle rendering generated based on your idea.

**\$300** Indoor, per bundle  
**\$400** Outdoor, per bundle



## Finish swapping

Personalize e-shopping by showing all material variants of your products.

**\$20**



## Product swapping

Showcase various product models in a striking 3D lifestyle rendering.

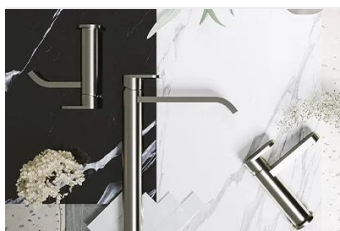
**\$80** including 3D modeling



## Product 3D modeling

Get a 3D model of your product for lifestyles, silos and AR.

**\$40** if you send an stp model  
**\$80-160** from CAD file



## Flatlay rendering

Highlight detailing and the beauty of your product's materials by combining them in a flatlay.

**\$150**

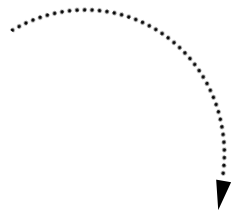


## Silo rendering

Show your product against a white background.

**\$30**





## ***Client rendering***

Show customers how your product will transform their space using client rendering. We will create a lifestyle for their space, put your product in the scene, and deliver a perfect result.





# *Lifestyle on demand*

Get a unique, on-brand lifestyle for your product marketing. Send us a brief description of your idea, attach a reference image, and we will create a photorealistic rendering that will make your product stand out online and in print.





# *Finish swapping*

Show every material version of your products. This way, you will highlight the strengths of each option and cater to different tastes and needs. In comparison to photoshoots, the solution is 100X as fast and budget-friendly.





# ***Product swapping***

Let e-shoppers easily compare various product models. Show them in the same lifestyle scene so the viewers can see the effect of each product version on the design.



# ***Product 3D modeling***

Get an accurate 3D model for your product, and you will unlock hundreds of opportunities for creative marketing. A 3D model is key to material swapping, silos and lifestyles, Augmented Reality, 360-degree views, and many, many more visuals.



Also, you can get a 50% discount if you send us an STP model.



# ***Talent rendering***

Make sure that your imagery attracts your specific target audience like a magnet. Have 3D talents added to the scene seamlessly and in photorealistic quality. We can use any 3D characters based on your description.



***Kitchen cleaning zone***

522235 Talent

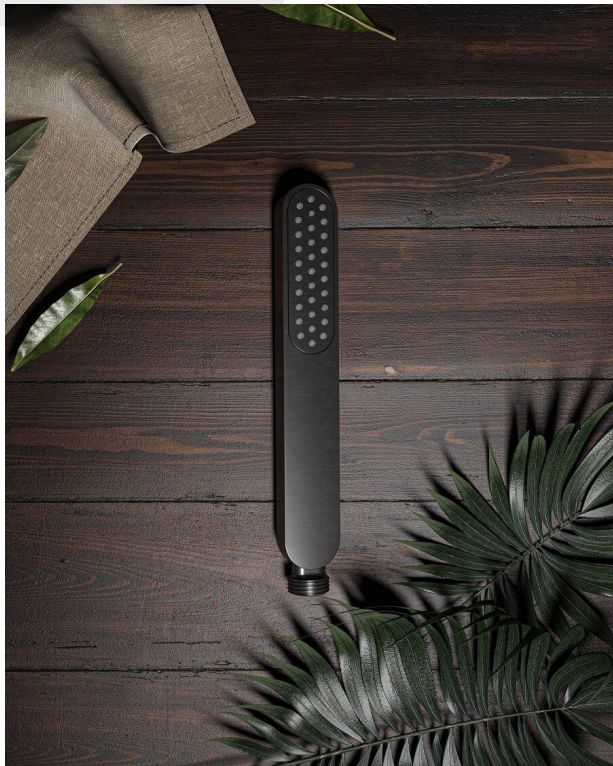


***Freestanding Tub Scene***

522086 Talent

# *Flatlay rendering*

Flatlay is the best way to focus customers' attention on fine detailing, quality materials, and appealing textures. Also, a 3D flatlay is an excellent way to show how to combine your products. The image is bound to attract attention online and is especially appreciated by interior designers.





# ***Silo rendering***

Get a universal marketing asset to use on product pages, your website, and e-commerce platforms. Silos are often requested by the latter, and these give the most clear and accurate representation of the product in terms of colors, textures and detailing.




## ***Silo finish options***

Make sure your clients appreciate the beauty of every material option of your product by using silos. Their unique strength is that the white backdrop doesn't interfere with colors and textures. On the contrary, it makes them pop and catch attention. This way, e-shoppers will easily select the solution that suits perfectly their design vision.





# Competition

Criteria	In-house team	Freelance	Traditional Photography	 CGIFURNITURE
Initial Investment	<b>High</b> (software, hardware, training)	<b>Moderate</b> (mainly hiring costs)	<b>High</b> (camera gear, studio setup)	<b>Low</b>
Ongoing Costs	<b>Moderate</b> (maintenance, upgrades)	<b>Varies</b> (based on project or hourly rates)	<b>Moderate</b> (equipment maintenance, studio rent)	<b>Fixed</b> (based on projects)
Realism	<b>High</b> (with skilled artists)	<b>Varies</b>	<b>Very High</b> (actual objects)	<b>High</b>
Consistency	<b>High</b> (same team & tools)	<b>Moderate</b> (may vary with different freelancers)	Moderate (lighting, setup consistency)	<b>High</b>
Turnaround Time	<b>Fast</b> (dedicated team)	<b>Varies</b> (based on freelancer availability)	<b>Moderate</b> (setup & post-processing time)	<b>Fast</b>
Scalability	<b>Moderate</b> (limited by availability of high-skilled CG artists)	<b>Low-Moderate</b> (limited by individual capacity)	<b>Low</b> (limited by physical setup space)	<b>High</b>
Revisions & Adjustments	<b>High</b> (direct control)	<b>Moderate</b> (depends on agreement)	<b>Low</b> (physical reshoots required)	<b>High</b> (3 included)
Communication Ease	<b>High</b> (in-house discussions)	<b>Moderate</b> (external communication)	<b>High</b> (direct in-person)	<b>High</b> (CGI CRM)
Medium Modeling cost	<b>\$378</b> ( <a href="#">source</a> ) (3 models per week)	<b>\$120</b> ( <a href="#">source</a> )	-	<b>\$150</b>
Medium Lifestyle cost 4k	<b>\$827</b> ( <a href="#">source</a> ) (2 lifestyles per week)	<b>\$200</b> ( <a href="#">source</a> )	<b>\$2.000</b> ( <a href="#">source</a> )	<b>\$300</b>

# Quarterly packages

We custom-design pricing packages for businesses.  
This helps us to find ways to offer you bigger discounts.

**Subscribe to get a discount!**

Standard

**\$4000** / month

\*Billed quarterly (\$12000 / 3mo)

**12% Discount**

Premium

**\$8000** / month

\*Billed quarterly (\$24000 / 3mo)

**24% Discount**

Enterprise

*from*

**\$16000** / month

\*Billed quarterly

**Individual price**



## Here are our Partners



**EASY BATHROOMS**  
SIMPLY LUXURIOUS



**AQUALLA**



**hotbath**  
italian bathroomware

**seawin**

**NORM**

**domovari**

**nok**



**WATER CREATION**



**WHITE SQUARE**  
VANITIES



**HIETAKARI**



**BRANDT**



**UK Radiators**  
QUALITY RADIATORS. DELIVERED

**eko** by SOPHSTONE

**Sanitairkamer**

**loetrà**

**AQUA PRESTIGE**



# ***What files are needed?***

For all the projects you will see here, our clients provided us with detailed briefs and attached all the necessary files. Such comprehensive SOWs allowed us to deliver the results at the costs and within the timeframes you will find by the renderings. Take a look at the list of main elements of these briefs so you could use them.



## **CAD Files & Photos**

Product drawings (in dwg, pla or pdf file), photos, and sketches (if available).



## **References**

Photos for lighting, composition, general mood, furniture, decor, and other elements to use in the render.



## **Brief File**

A pdf file with project information: where to use certain textures, texture examples, names, links, etc.



## **Textures**

Material textures in high quality, usually as front and side photos of an object or links to them.



## **Project Description**

General info: how the renders will be used, what project features they are to highlight, etc.

***Fill in the brief now***

If you already have a good-quality 3ds Max, Revit, Maya, or Rhino 3D model of the product, please share it with us. It will help you save money and time. However, the 3D model should be checked by the CGI team first.



# Contact Us

Contact us via phone, email or our website's chat - we're available 24/7 and gladly answer all your questions.

**TEL :** +1 607 383 2001 NY, USA

**TEL :** +44 203 617 1683 LONDON, ENGLAND

**EMAIL :** [SALES@CGIFURNITURE.COM](mailto:SALES@CGIFURNITURE.COM)

**WEB :** [CGIFURNITURE.COM](https://CGIFURNITURE.COM)



2024 © CGIFURNITURE. ALL RIGHTS RESERVED.